

CITY COUNCIL

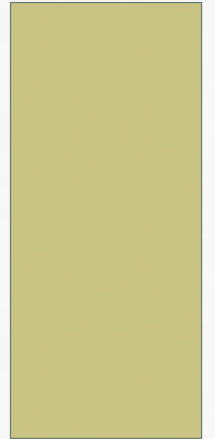


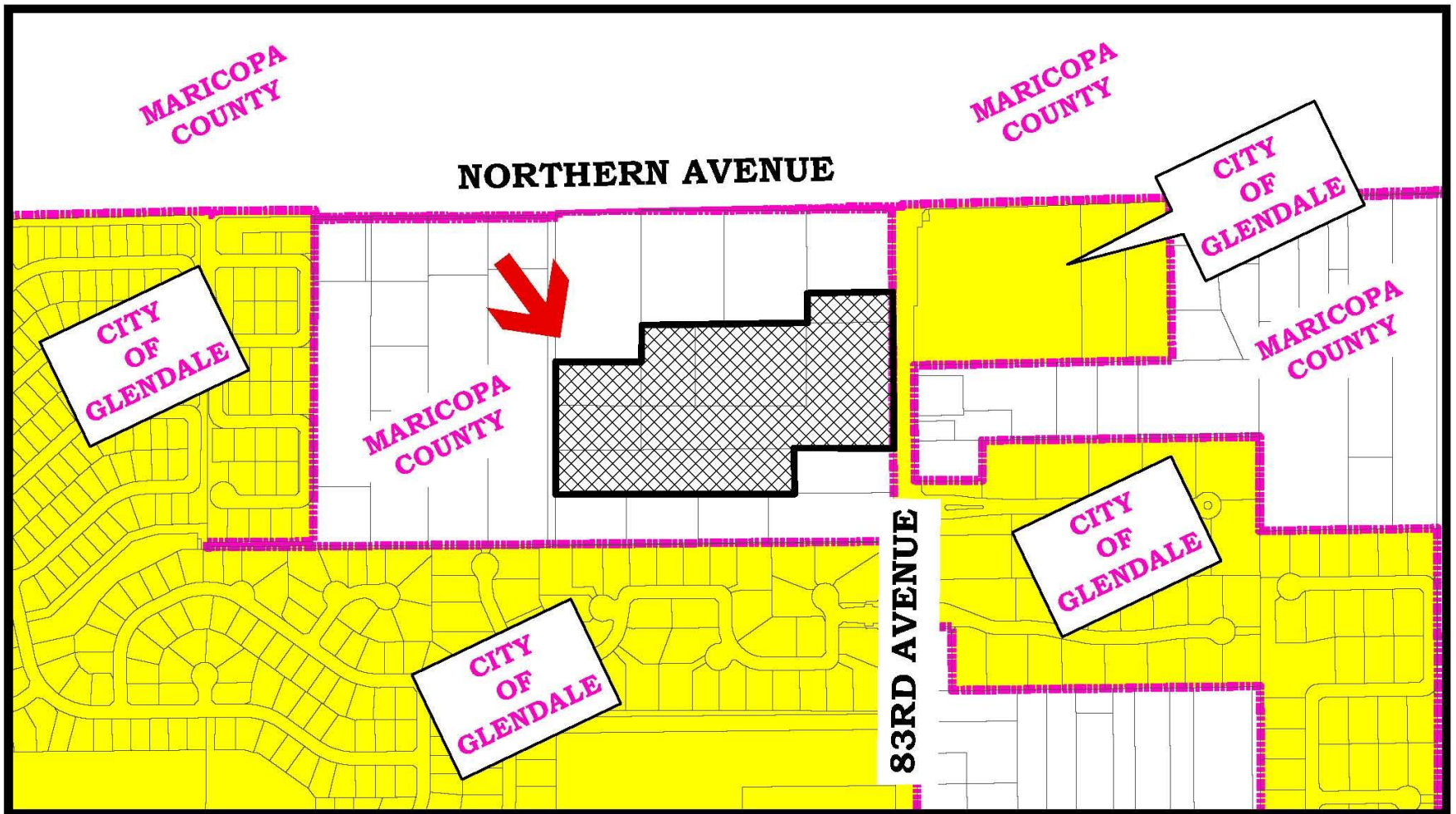
08.09.16

City of Glendale Planning Division

AN-201
ANNEXATION

7740 NORTH 83RD AVENUE





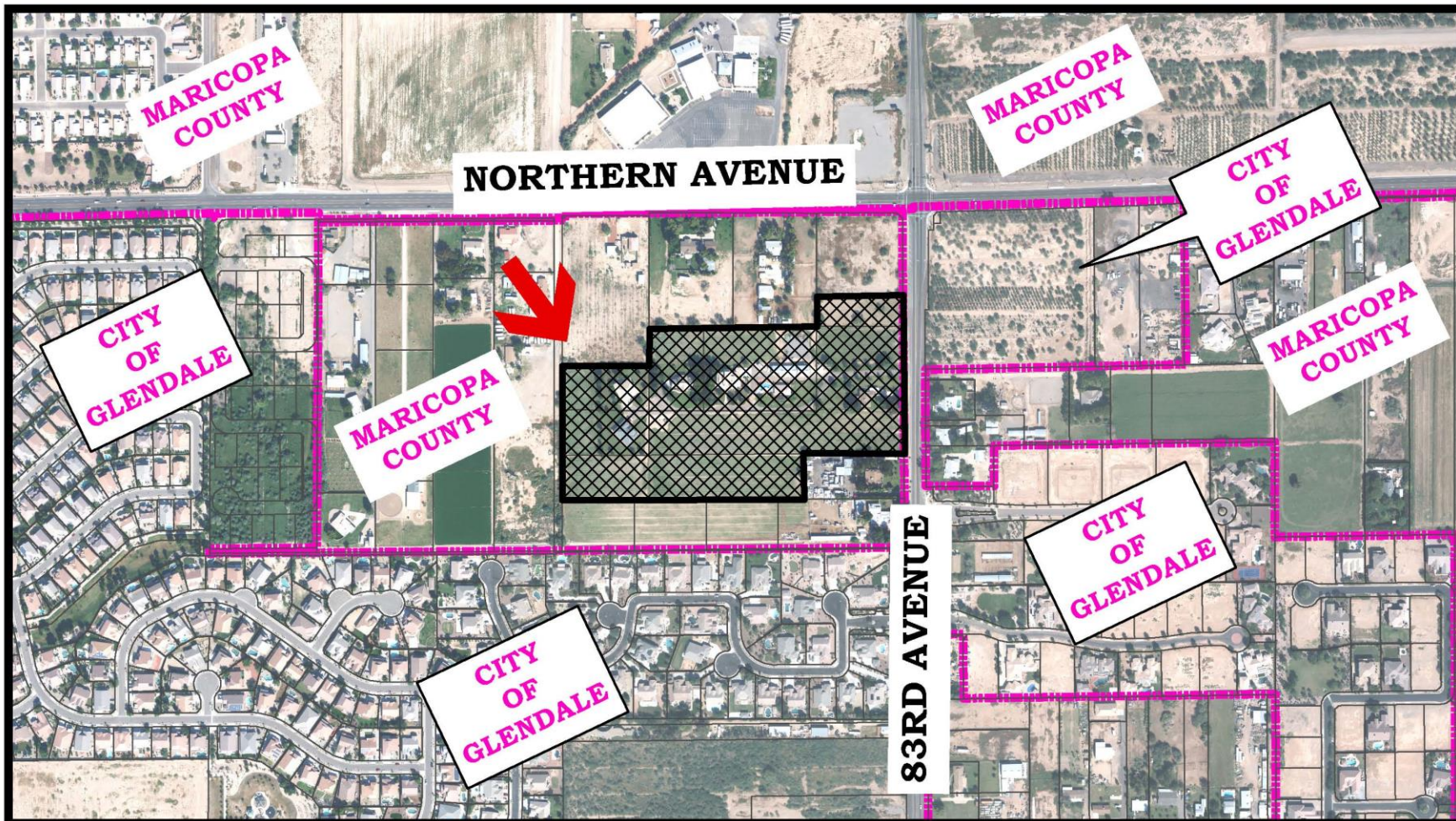
CASE NO. AN-201

PROPOSED ANNEXATION OF APPROXIMATELY 16 ACRES AT
7740 N. 83RD AVENUE



- Glendale City Boundaries
- City of Glendale
- Proposed Annexation





CASE NO. AN-201

PROPOSED ANNEXATION OF APPROXIMATELY 16 ACRES AT
7740 N. 83RD AVENUE



- Glendale City Boundaries
- XXXXXX Proposed Annexation



CITY COUNCIL



08.09.16

City of Glendale Planning Division