


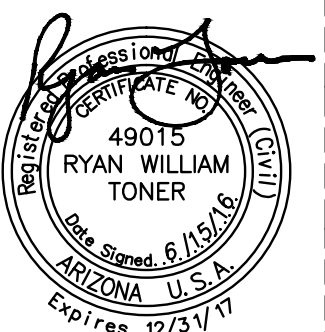


**Dibble Engineering**   
7500 N. Dreamy Draw Drive  
Suite 200  
Phoenix, AZ 85020  
P 602.957.1155



ENGINEERING DEPARTMENT

GLENDALE, ARIZONA 85301 (623) 930-3630

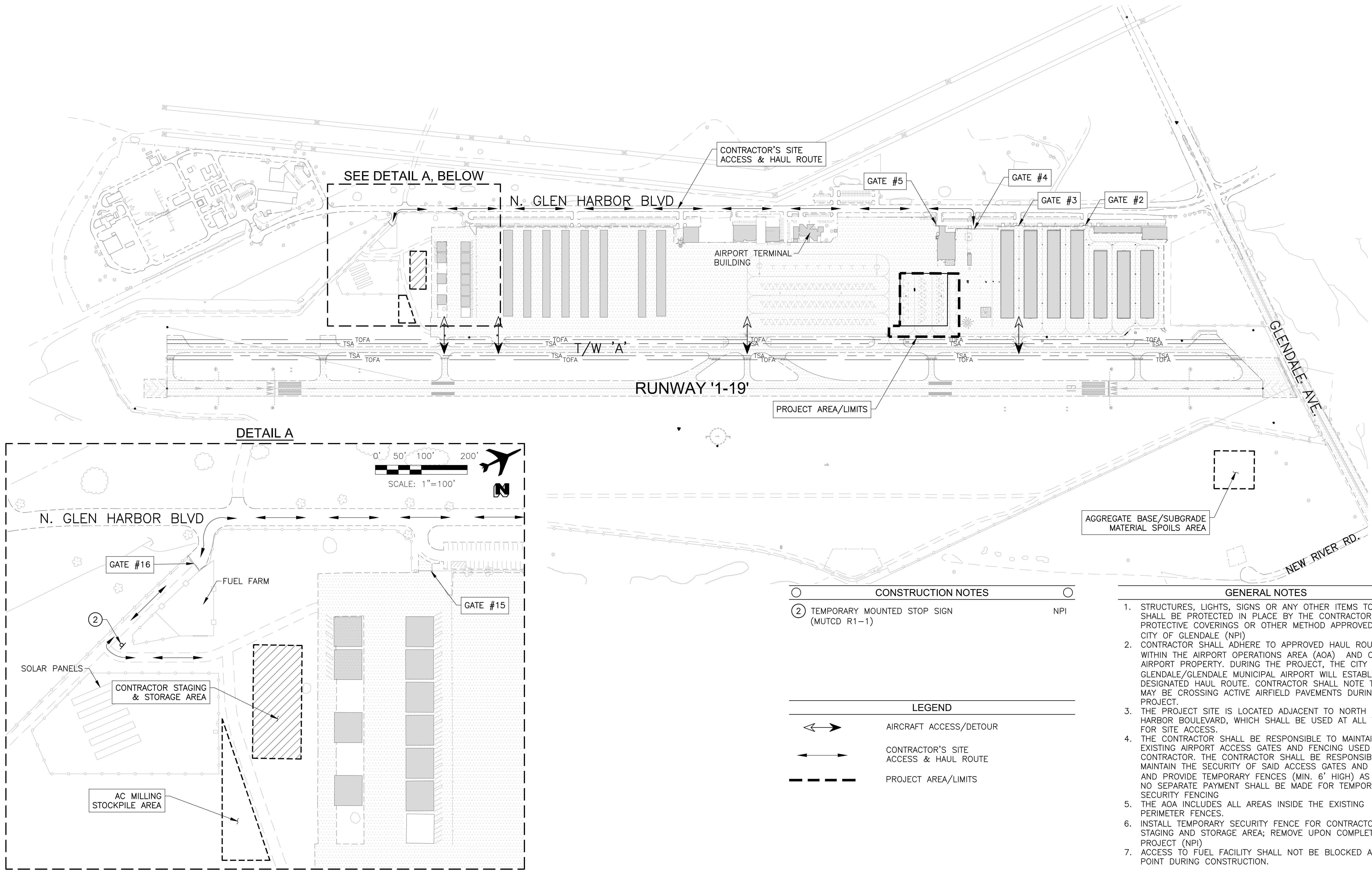


Designed				
DHD				
Drawn				
TDO				
Checked				
RWT				
			No.	Date
			Description	
REVISIONS				

# 151609 Glendale Municipal Airport North Apron Rehabilitation - Bid Package #1

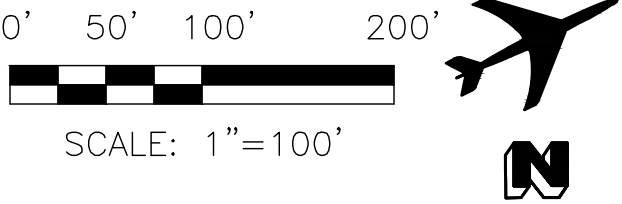
**TWO WORKING DAYS BEFORE YOU DIG  
CALL FOR THE BLUE STAKES**  
**602.263.1100**  
BLUE STAKES CENTER  
CALL COLLECT


SHT. 5  
OF 16

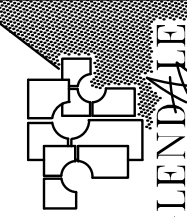


J:\2016\1016032 GLENDALE NORTH APRON REHAB\CAD\BID PACKAGE #1\16032-G1\_4.DWG Jun 15, 2016 7:04 PM

FILE NAME: 16032-G1 4.dwg PLOTTING DATE: 6/15/2016 REVISION DATE: --- AUTOCAD VER.: 2013



**Dibble Engineering**   
7500 N. Dreamy Draw Drive  
Suite 200  
Phoenix, AZ 85020  
P 602.957.1155



# CITY OF GLENDALE

# ENGINEERING DEPARTMENT

3830 W. GLENDALE AVE.  
GLENDALE, ARIZONA 85301 (623) 930-3630



Designed					
DHD	△				
Drawn	△				
TDO	△				
Checked	△				
RWT	No.	Date	Description		
	REVISIONS				

**151609**  
**Glendale Municipal Airport North**  
**Apron Rehabilitation - Bid Package #1**

PROJECT SITE PLAN

# G1.5



SHT. 6  
OF 16

## PROJECT DESCRIPTION

THIS PROJECT INCLUDES FULL PAVEMENT REPLACEMENT,  
FOG SEAL COAT, MARKING AND NEW TIE DOWNS WITHIN  
THE PROJECT LIMITS SHOWN ABOVE.

## LEGEND

PAVEMENT SECTION 1  
DWG G3.0

FOG SEAL COAT

## GENERAL NOTES

1. CONTRACTOR SHALL BE RESPONSIBLE FOR THE PROTECTION OF HIS OWN EQUIPMENT.
2. CONTRACTOR IS RESPONSIBLE FOR THE REPAIR OF ANY HAUL ROADS USED AND ANY OTHER AREAS DISTURBED BY THE CONTRACTOR THAT ARE OUTSIDE THE PROJECT AREA LIMITS. REPAIRS SHALL BE MADE TO THE SATISFACTION OF GLENDALE MUNICIPAL AIRPORT AND/OR ENGINEER, AND SHALL BE AT THE CONTRACTOR'S SOLE EXPENSE.
3. THE CONTRACTOR WILL PROVIDE GATE GUARDS/PROJECT ESCORTS FOR ACCESS TO AND FROM THE PROJECT AREA WITHIN THE AIRPORT LIMITS.
4. REFER TO DWG G2.0 FOR BARRICADE & AIRCRAFT DETOUR PLAN