



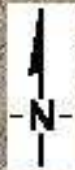
FROM PAGE 1



4033'

N Glen Harbor Blvd

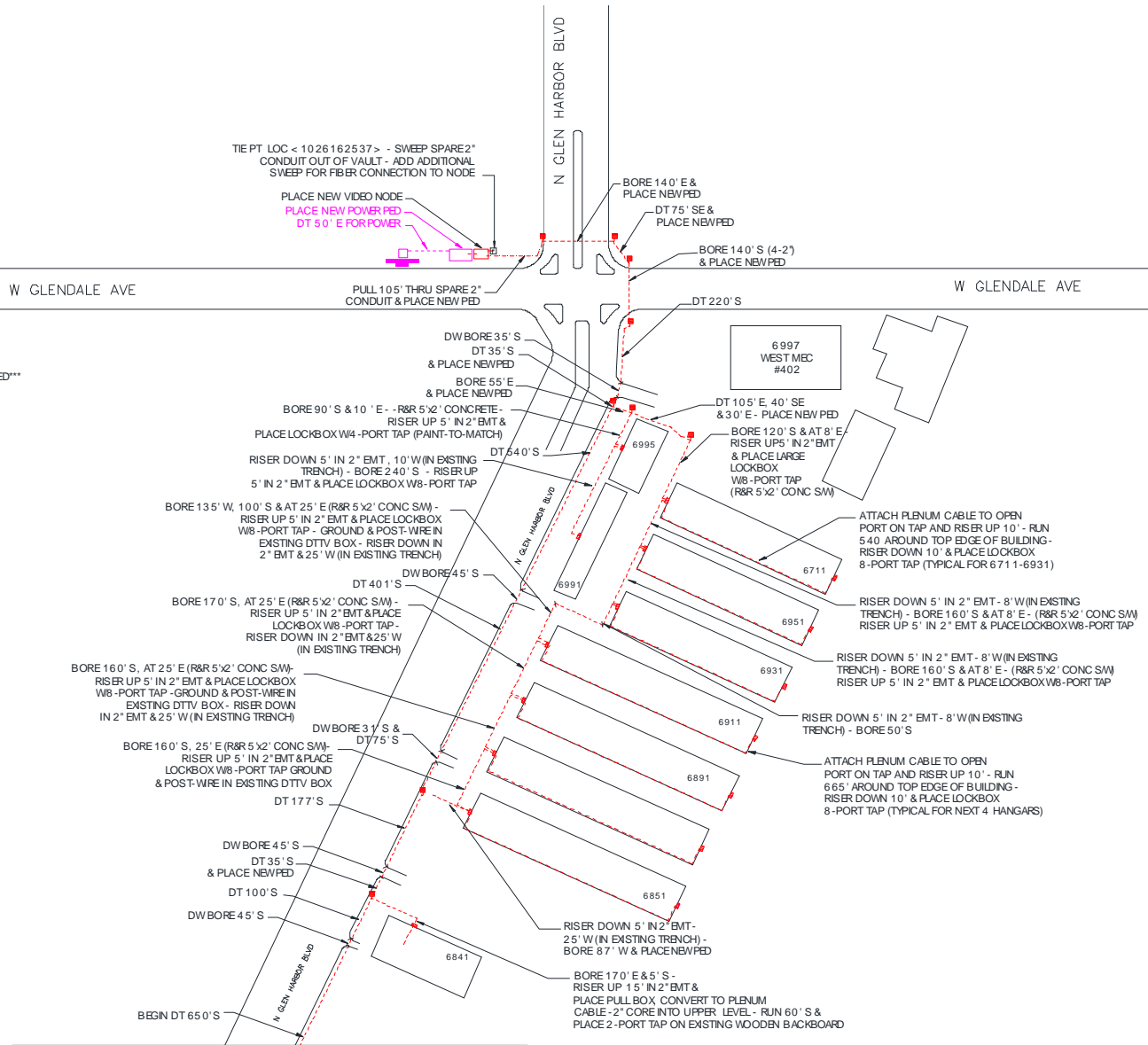
END POINT



Blue Dashed Conductor	
Green Triangular Marker	
Red Flash Arrestor	
Red Overhead Arrestor	
Black Rectangle Marker	
Red Rectangle Marker	



*** ALL ATF DOWN GLEN HARBOR BLVD 2-2" CONDUIT UNLESS OTHERWISE NOTED***
 *** GROUND ALL PULL BOXES & VAULTS***
 *** ALL LATERALS 1-2" CONDUIT, UNLESS OTHERWISE NOTED***
 *** PLEASE NOTE: ALL IN/OUT LATERALS IN A SINGLE TRENCH***



 COX COMMUNICATIONS 1550 W DEER VALLEY ROAD PHOENIX, ARIZONA 85027	DESIGNED BY ALEVIS FOX	DATE: 5/15/15	SHEET 1 OF 2
	APPROVED BY 	 	
EC SOURCE 6575 N GLEN HARBOR BLVD GLENDALE, AZ 85307	PROJECT NUMBER: 41500150000M300035	UNIT COUNT: 	
SCALE 1" = 100'	SYSTEM FT. / CONDUIT FT. NEW 14054' / 100'	 	
NODE NUMBER NEW	POWER SUPPLY NEW	 	
GRID 22.2, 23.2	GRID	FILE NUMBER	

CB PROJECT

TO PAGE 2

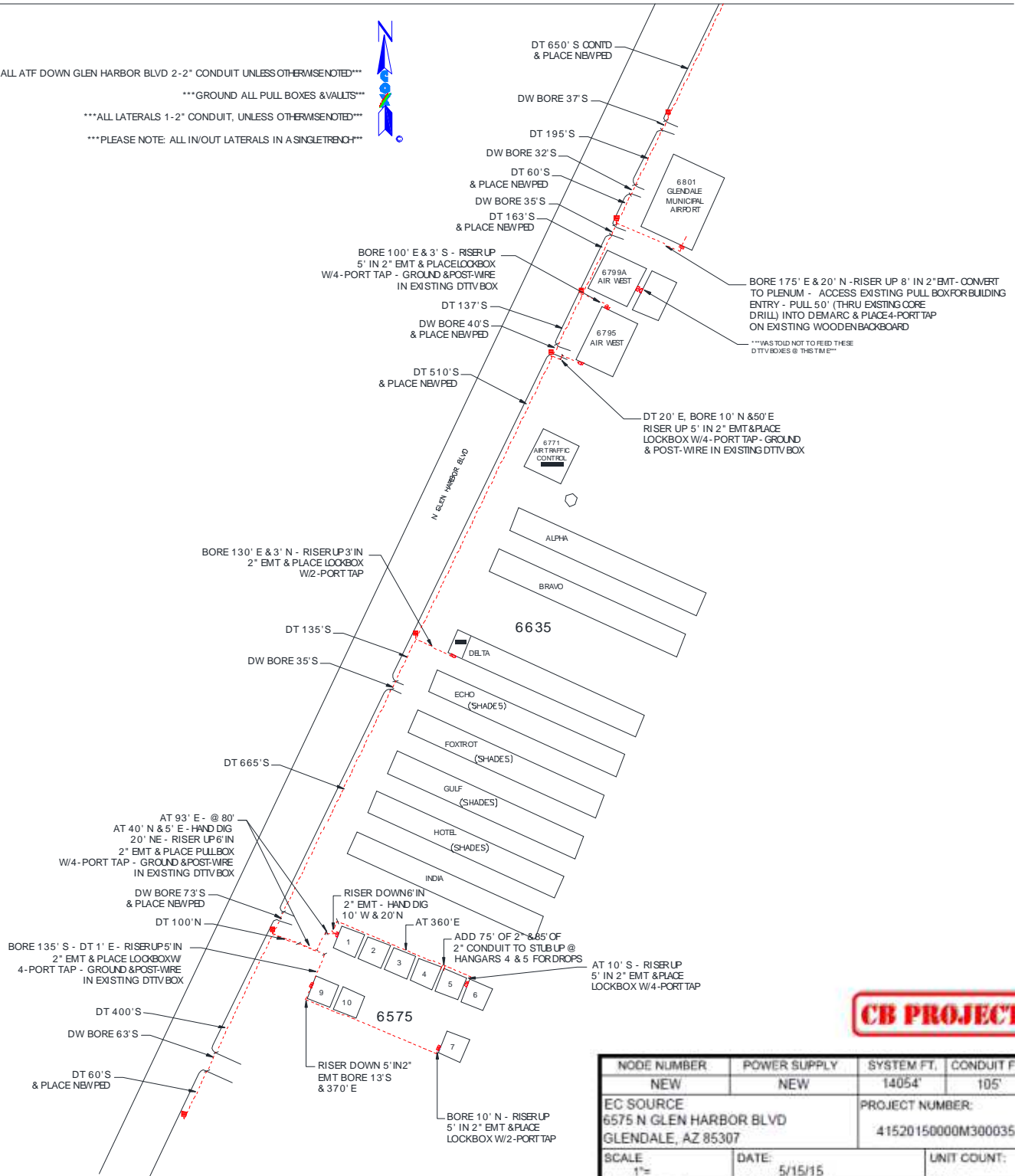
FROM PAGE 1

ALL ATF DOWN GLEN HARBOR BLVD 2-2" CONDUIT UNLESS OTHERWISE NOTED

GROUND ALL PULL BOXES & VALTS

ALL LATERALS 1-2" CONDUIT, UNLESS OTHERWISE NOTED

PLEASE NOTE: ALL IN/OUT LATERALS IN A SINGLE TRNG



CB PROJECT

NODE NUMBER	POWER SUPPLY	SYSTEM FT.	CONDUIT FT.
NEW	NEW	14054'	105'
EC SOURCE 6575 N GLEN HARBOR BLVD GLENDALE, AZ 85307		PROJECT NUMBER: 41520150000M300035	
SCALE 1"=	DATE: 5/15/15	UNIT COUNT:	
DESIGNED BY ALEXIS FOX	APPROVED BY:	SHEET 2 OF 2	
1550 W DEER VALLEY ROAD PHOENIX, ARIZONA 85027			
GRID 22-2	GRID	FILE NUMBER	